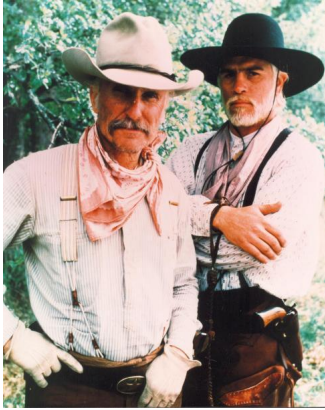


Lonesome Dove, Hopkins County Connection

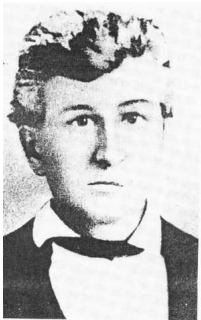
Written by j Harold Utley

Thursday, 22 January 2009 17:25



Lonesome Dove-Hopkins County Connection...did you know that this historical event originated here?

By J Harold Utley, Hopkins County Historian.

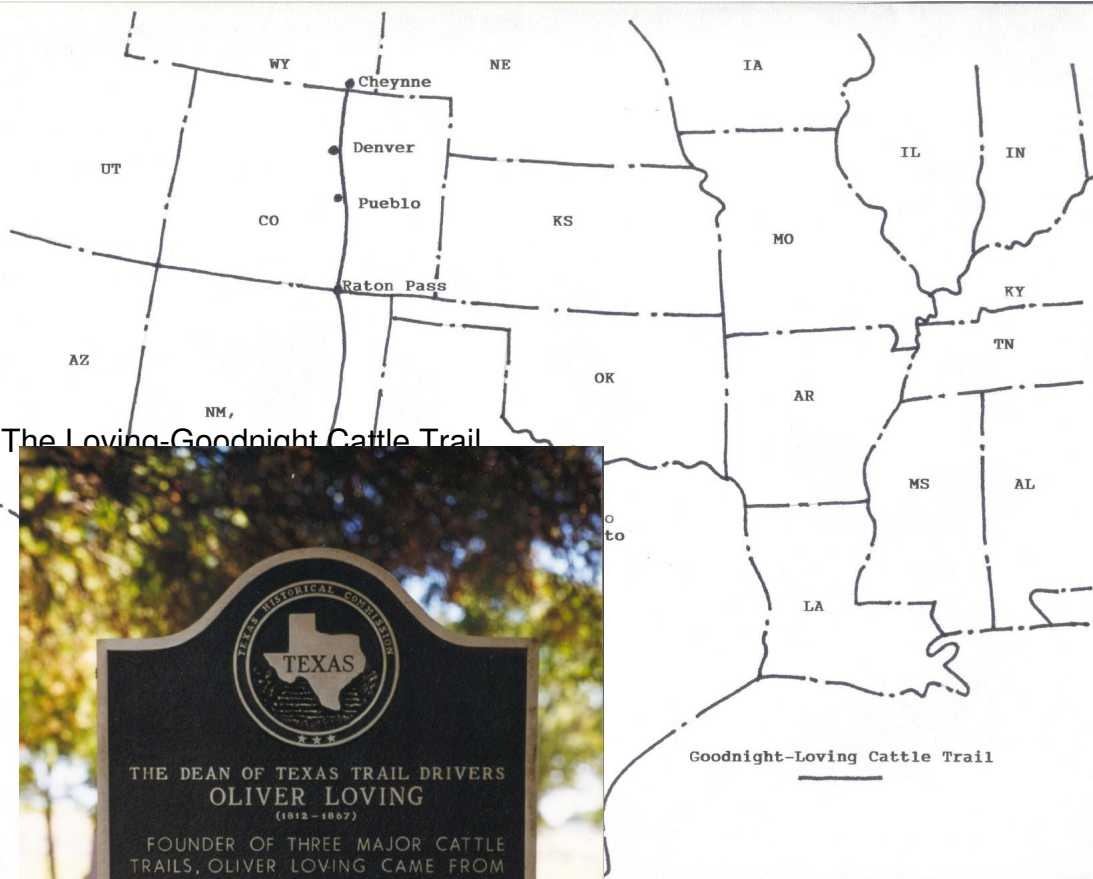


Oliver Loving was born in Hopkins County on December 4, 1812. He was the second of nine children of Joseph and Susannah Mary (Polly) Bourland Loving. Oliver and his older brother James married sisters, Susan and Margaret Morgan. Their father, John Morgan, was the first representative from Muhlenberg County in the Kentucky Legislature.

In 1843, Oliver, his wife Susan, brother James and his wife Margaret, and their sister Eveline and her husband, Ellis Littlepage, and their children departed Hopkins County for the Republic of Texas.

Lonesome Dove, Hopkins County Connection

Written by j Harold Utley
Thursday, 22 January 2009 17:25



Lonesome Dove, Hopkins County Connection

Written by j Harold Utley

Thursday, 22 January 2009 17:25



Marker for weathered cowboy's grave



Photo of the two men, one of whom is the character of Oliver Loving, and Tommy Lee Latham, who is the character of Boone. Photo by the author of <http://www.hopkinscountytexas.com>